



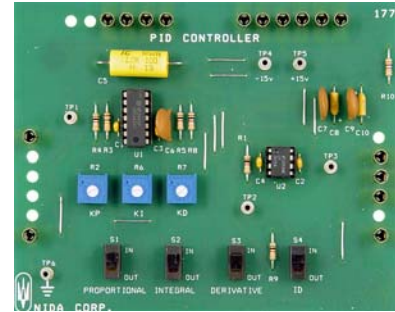
NIDA SPECIFICATIONS



MOTOR CONTROL SYSTEMS EXPERIMENT CARD SET MODEL 170

General Description

The Motor Control Systems card set is designed for use with Nida Model 130 series training consoles. DC series field and brushless motors, pulse width modulation and amplification, open loop motor system, motion detection, error detection and feedback, closed loop systems, position detection and PID control systems are taught in theory with an emphasis on hands-on operation and experiments.



Card Specifications

- Compatible with computer assisted instruction or traditional hard copy text materials.
- Pre-assembled circuits require no assembly, jumper wires, or soldering.
- Exposed components provide maximum technician accessibility.
- Push-on, pull-off connections ensure self-cleaning of contacts.
- Powered automatically by computer instruction or manual push-button action.
- Nondestructive faults activated by computer instruction or manual push-button action.
- Generated signals are measurable with standard test equipment.

Experiment Cards

- Proportional, Integral, and Derivative Controller (PID)
PC130-177
- Motor Driver Amp
PC130-179
- Motor and Load
PC130-178

Note: Nida Trainer Model 170
Motor Control included.

170Motors-0701rev1-0706

NIDA CORPORATION

300 S John Rodes Boulevard Melbourne FL 32904
Phone (321) 727-2265 FAX (321) 727-2655

www.nida.com